

---

## Galerie



### Top Designers Share the Most Fascinating Objects at the 2022 Winter Show

Corey Damen Jenkins, Young Huh, Keita Turner, and more share their picks from the legendary art and antiques fair, which opens April 1

BY GALERIE EDITORS

MARCH 29, 2022

**T**he Winter Show is officially back in full swing, returning for its 68th edition after being postponed last year due to the ongoing pandemic. For most of its illustrious history, the renowned arts and antiques fair has been hosted in the cavernous hall of New York's historic Park Avenue Armory. But this year, for the first time ever, some 60 international dealers will be setting up shop in the former Manhattan flagship of defunct upscale department store Barneys at 660 Madison Avenue, which has remained vacant for the past two years.

From April 1, visitors can expect to find the usual fascinating smorgasbord of art, jewelry, antiques, and decorative objects, spanning over 5,000 years of history. Ahead of the opening, *Galerie* asked a group of leading designers to give an exclusive look and share the objects that caught their eye. Among them are the show's design cochairs Corey Damen Jenkins of Corey Damen Jenkins & Associates; Mark Ferguson and Andrew Oyen of Ferguson & Shamanian Architects; Keita Turner of Keita Turner Design; as well as jewelry and decorative

---

## Galerie

arts historian Levi Higgs, who designed the vignettes for the jewelry box windows. Marking another first, the designers were each tasked with curating a window display, loaning works from the participating galleries. Below, here are the highlights that are not to be missed.

### Corey Damen Jenkins

Acclaimed designer and founder of Corey Damen Jenkins & Associates, Corey Damen Jenkins is best known for blending colors and patterns to perfection.



William Vile English; the wimpole hall library armchairs; circa 1750  
PHOTO: COURTESY OF RONALD PHILLIPS LTD.

#### 1. Wimpole Hall Library Armchairs / Ronald Phillips Ltd.

“Design is all about mixing of inspirations, time periods, and the old with the new to create a cohesive story. The chairs immediately caught my eye due to their great heft yet delicate detailing. The acid, titanite-like green also feels very contemporary. These would look very handsome in a library or flanking a credenza.”



---

## Galerie

### 2. Ruby Red Recamier Sofa / Hirschl & Adler Galleries

"I was lucky to include so many incredible sources in my window for The Winter Show. The ruby red recamier sofa is one piece I am ready to take home with me. It features a beautiful balance between the bold and vibrant red with careful gilt touches and impeccable woodworking."



### 3. *Allégories des Arts* wallpaper/ Carolle Thibaut-Pomerantz

"These wallpapered panels are a feast for the eyes. They would bring dimension as well as a sense of architecture and storytelling to a space. There are so many cube-like city apartments and residences. I would love to use this in a city home to instantly elevate the interior. The more you look at the panels, the more there is to discover!"

## Mark Ferguson and Andrew Oyen of Ferguson & Shamamian Architects

Established in 1988, Ferguson & Shamamian Architects have reimagined homes by blending new and old elements to create a new version of "Americana."



---

## Galerie

### 1. Pene du Bois *Approaching Storm, Racetrack* / Debra Force Fine Art

“There’s a liminal feeling to *Pene du Bois’s Approaching Storm, Racetrack*, which we hung on the North wall of our window display. The work captures the electric threshold between the enjoyment of a serene, sunny afternoon and the spontaneity of an unheralded squall. Not only does the piece suit our post-party tableau with its unsettled but lively aura, but if hung in an apartment or house, it would continue to captivate our eyes and minds.”



Meret Oppenheim; *Husch Husch, der schönste vokal entleert sich!*, 1985 18ct gold necklace with chains suspending a rod with five hard-stone and one gold pendant.  
PHOTO: COURTESY OF DIDIER LTD

### 2. Meret Oppenheim Necklace at Didier Ltd.

“This piece reminded me of something Peggy Guggenheim might have appreciated and worn so well.” –Andrew Oyen



CHILDE HASSAM; *Rainy Day, New York*, 1892 Watercolor, gouache, and charcoal on paper  
PHOTO: COURTESY OF HIRSCHL & ADLER GALLERIES

---

## Galerie

### 3. Childe Hassam, *Rainy Day*, New York / Hirschl & Adler Galleries

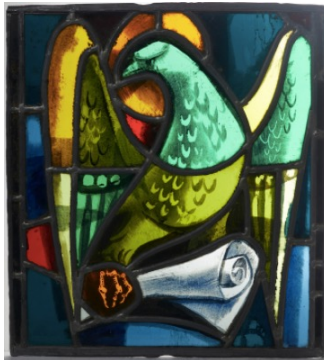
“It is again surprising that a piece that is obviously of a particular period speaks so clearly to us in a different time.” —Andrew Oyen



Antonio Carli; 1975; Italian 18kt gold & micro mosaic pair of earrings  
PHOTO: COURTESY OF JAMES ROBINSON, INC.

### 4. Italian gold and micro mosaic earrings / James Robinson Inc.

“The incorporation of micro mosaic in this pair of earrings is surprising and beautiful. While the form of these earrings is remarkable and strong, one can imagine them complementing and not competing with the wearer. While they are of a particular period and obviously are inspired by classical forms, one can imagine them being worn by many, complementing many costumes.”  
—Andrew Oyen



Max Ingrand; suite of 17 stained glass panels representing symbolic images of the old and new testament  
PHOTO: COURTESY OF MILORD ANTIQUES



---

## Galerie

### 5. Stained-glass panels by Max Ingrand / Milord Antiques

“The expression on the eagle’s face is astonishing. Is this civic art? How wonderful that art which is often ‘quiet,’ is anything but.” —Mark Ferguson

### Young Huh

Founder of Young Huh Interior Design, this Detroit-native specializes in creating the perfect space for both commercial and residential properties. She blends both traditional and modern elements to bring distinct personality in every creation.



Jules Leleu; Meuble feu d'Artifices, Fireworks Cabinet France, circa 1946  
PHOTO: COURTESY OF MAISON GERARD

### 1. Jules Leleu, Fireworks Cabinet / Maison Gerard

“I adore anything by Jules Leleu! These mahogany Fireworks Cabinets are something I particularly treasure with their detailed mother-of-pearl and ebony inlay and gorgeous gilt details. These are the perfect pieces with which to add symmetry to a space, which you can see in our window—along with gowns by Christian Siriano—at The Winter Show this year!”

---

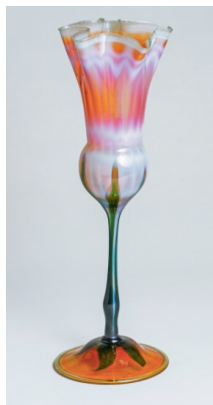
# Galerie



Alexander Calder; Spirale, 1965 Yvette Cauquil-Prince; wool tapestry handwoven  
PHOTO: COURTESY OF BOCCARA

## 2. Alexander Calder, *Spirale* / Boccara

“I’ve always loved the works of Alexander Calder and that holds true for this large-scale, striking tapestry from 1965. Because this is so graphic, I would surround it with pretty details—think soft lines and slender forms—to create balance and harmony. The scale of this tapestry allows it to hold its own in nearly any size space.”



Tiffany Studios; early ruffled flower form vase; circa 1898-1900  
PHOTO: COURTESY OF LILLIAN NASSAU LLC

---

## Galerie

### 3. Tiffany Studios Early Ruffled Flower Form Vase / Lillian Nassau LLC

“Every room needs a touch of pretty and this Early Ruffled Flower Form Vase by Louis Comfort Tiffany is just that. Shaped like a budding flower with a delicate stem and ruffled rim, it feels both exquisite and extremely chic.”

## Levi Higgs, Jewelry and Decorative Arts Historian

The Head of Archives and Brand History at fine jewelry maison David Webb, Higgs is an expert when it comes to the world of fine jewelry and rare treasures.



Micro Mosaic Brooch at James Robinson.  
PHOTO: COURTESY OF JAMES ROBINSON

### 1. Micro mosaic brooch / James Robinson

“To start, I have chosen the micro mosaic brooch depicting two swans and peace lilies from my own window display, on offer from James Robinson. I have always loved micro mosaics as an art form when used in jewelry, and the swans are meticulously rendered with each tiny colored glass tesserae. I would gladly display this brooch proudly under a domed magnifying glass for all to see the intricacies of the design and appreciate it.”



---

## Galerie



A highly important George IV shield for The King of Hanover; 1823 Maker's mark of Philip Rundell for Rundell, Bridge & Rundell Silver-gilt.

PHOTO: COURTESY OF KOOPMAN RARE ART

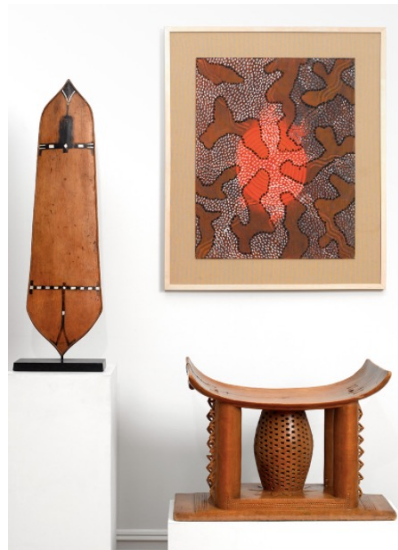
### 2. George IV Shield for The King of Hanover / Koopman Rare Art

“My next object is the Shield of Achilles from Koopman Rare Art in London. Aside from it being very rare and a beautifully made object, I was drawn to this immaculate shield because of one of my favorite books, *The Song of Achilles* by Madeline Miller. It tells the harrowing homoerotic story between Achilles and Patroclus, and this shield features prominently in their narrative of love and protection.”

## Keita Turner

Award-winning interior designer and founder of Keita Turner Design, Turner has an eye for detail that's unparalleled. In addition to styling the perfect space, she's also added home decor products to her already impressive roster.

## Galerie



Tim Leura Tjapaltjarri, *Centre Circle of Fire*, 1974.  
PHOTO: COURTESY OF TAMBARAN GALLERY FINE TRIBAL ART

### 1. Tim Leura Tjapaltjarri, *Centre Circle of Fire* / Tambaran Gallery Fine Tribal Art

“As soon as I saw this artwork from noted Aboriginal Australian artist, Tim Leura Tjapaltjarri, I knew I wanted to display it in my Madison Avenue window design for The Winter Show. Tjapaltjarri is known for his highly collectible Aboriginal dot art that depicts sacred dreaming stories to less revealing songlines. With ancestral roots to Aboriginal culture and lineage (my paternal great-grandmother immigrated to the United States from Papua New Guinea in the late 1890s), I was inspired by the indigenous worldview that centers the significance of the circle as a sacred symbol of the interdependence of all forms of life. After doing a bit of research, I became aware that The Ring of Fire is a region around much of the rim of the Pacific Ocean where many volcanic eruptions and earthquakes occur. I also learned that fire, annual controlled cultural burns, and circles or rings of fire had always been a part of indigenous and native occupied landscape for thousands of years prior to European colonization and Western settlers, as a spiritually purposeful regime for cultivating and restoring the land by clearing out underbrush and encouraging new plant growth.”

---

# Galerie



Sawada Hayato; Multi planar vessel, 2021. Glazed stoneware.

PHOTO: COURTESY OF JOAN B MIRVISS LTD. JAPANESE ART - ANTIQUE AND CONTEMPORARY

## 2. Sawada Hayato Vessel / Joan B. Mirviss Japanese Art

“Exquisite. The first word, the first adjective that comes to mind is “exquisite” when I admire this multi planar glazed stoneware vessel by Japanese artist Sawada Hayato. For their recent exhibition at the 2022 The Winter Show, entitled Kazari: Beyond Decoration, the Joan B Mirviss Ltd. gallery presents antique and contemporary Japanese art that splendidly delight the senses. I’m attracted to the dazzling geometric and textural surface pattern of this Hayato vessel. I thoroughly enjoy the angularity and asymmetrical friction explored by the artist. Its jaggedness is contemporary cool! I would use this piece to decorate the shelves of a display cabinet, wall shelving, sideboard or pedestal in the main parlor or entryway of a home of eclectic, yet elevated taste.”